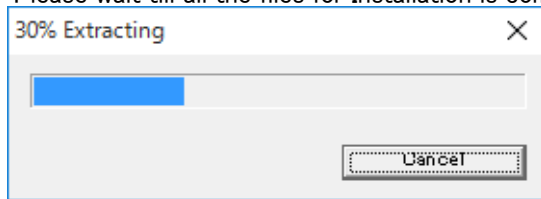
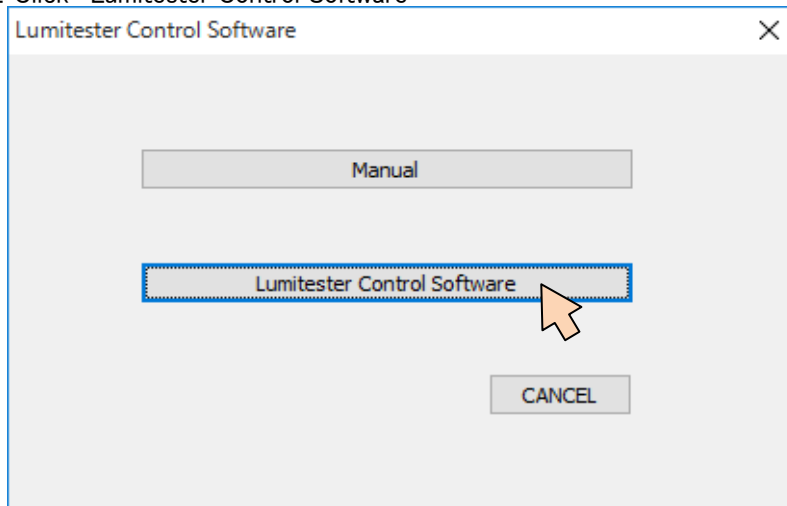


【Control Software Installation Procedure】 for Windows10

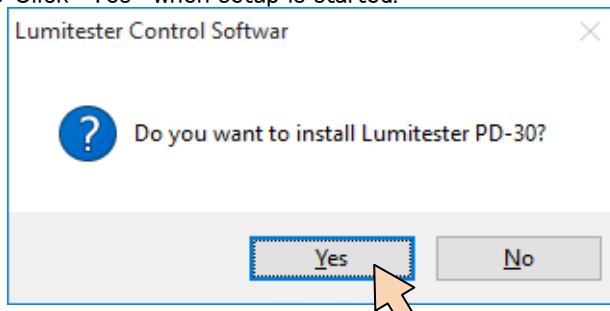
- 1 Double click "LumitesterPD-30_Setup.exe" and start.
Please wait till all the files for Installation is completed.



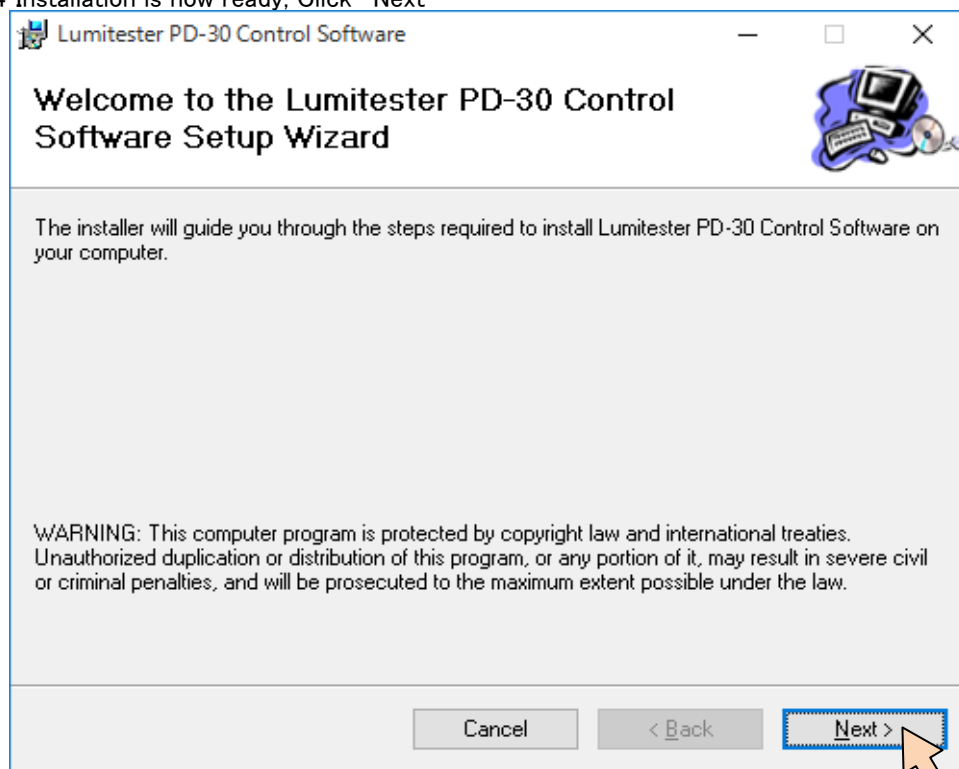
- 2 Click "Lumitester Control Software"



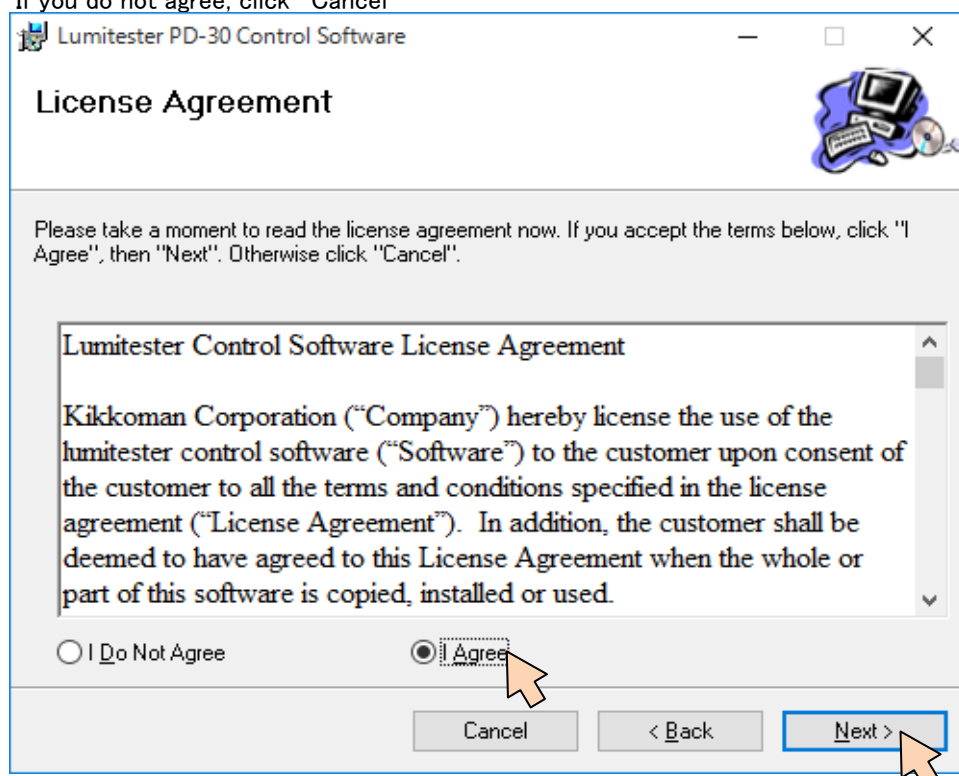
- 3 Click "Yes" when setup is started.



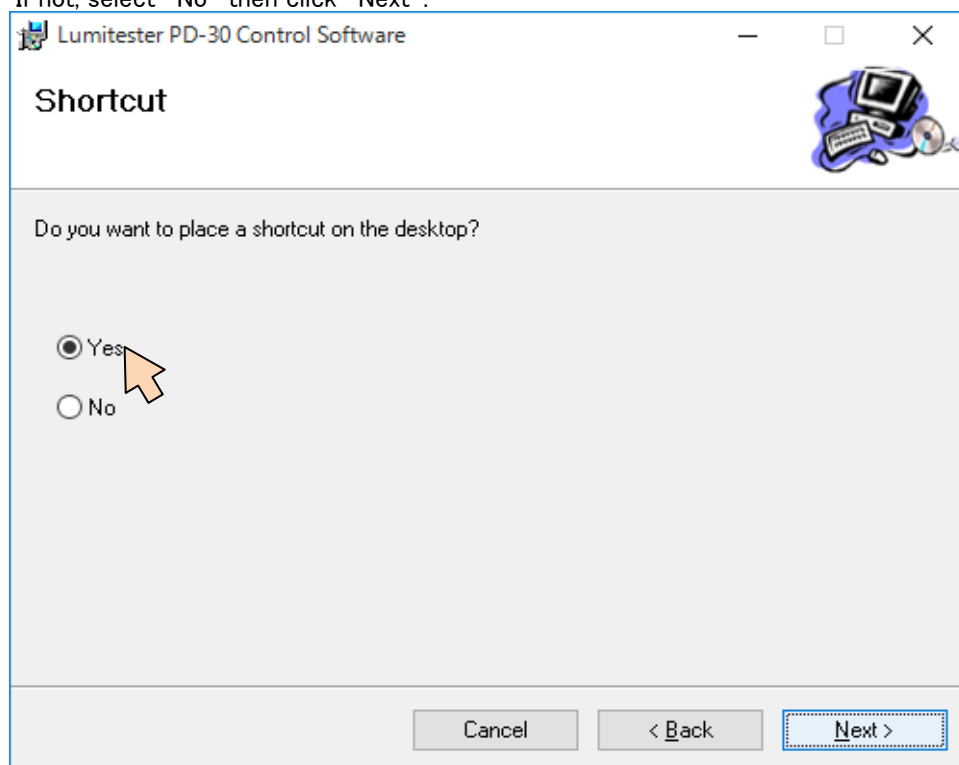
4 Installation is now ready, Click "Next"



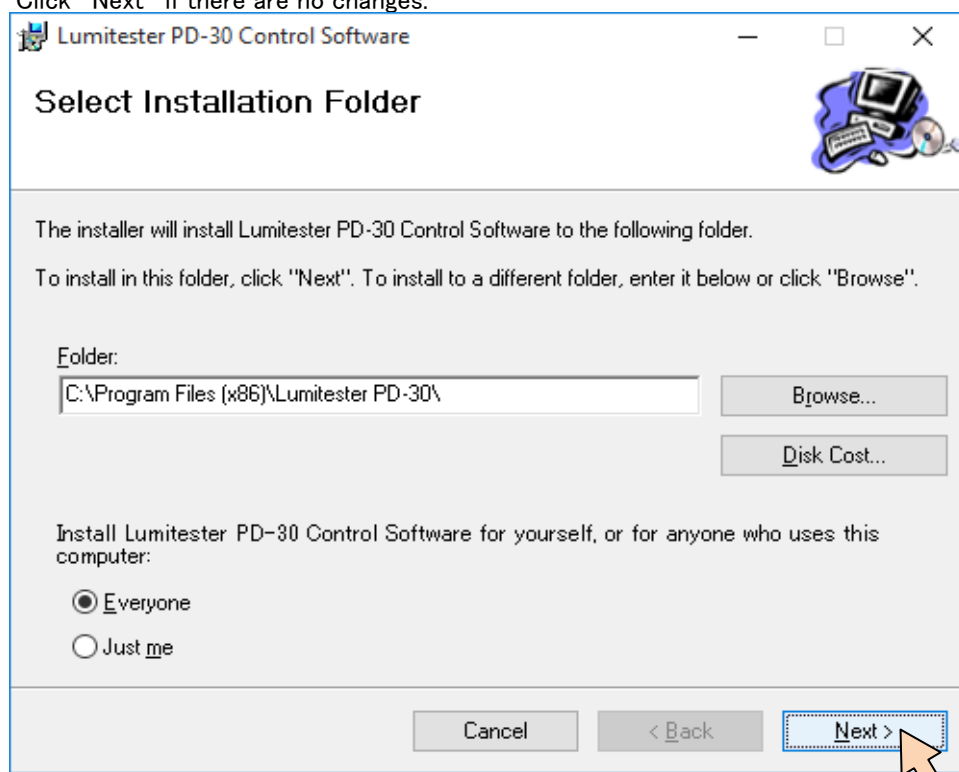
5 Confirm the contents of License.
Select "Agree" to agree and then click "Next"
If you do not agree, click "Cancel"



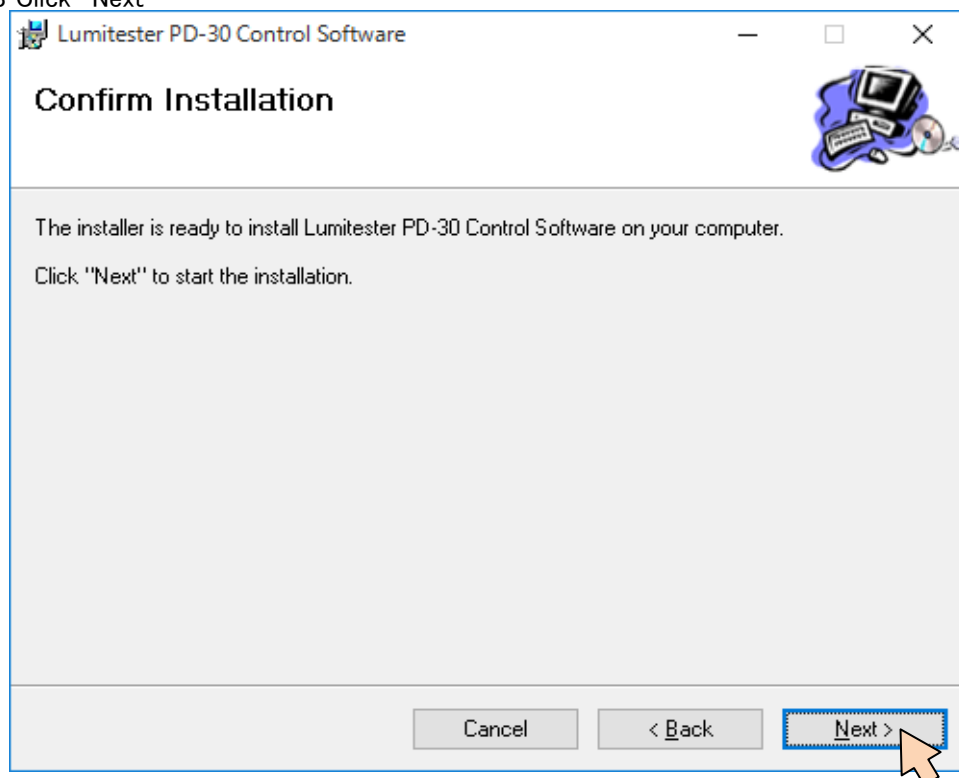
- 6 Click "Yes" if you prefer to have shortcut on the desktop,
If not, select "No" then click "Next".



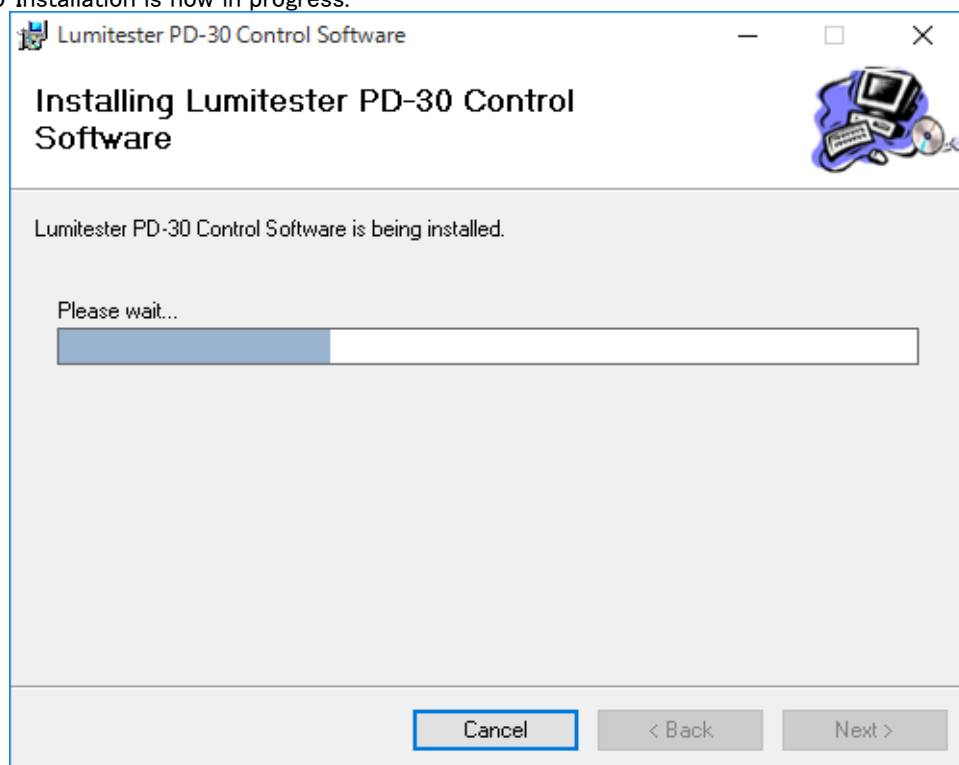
- 7 Enter the name of folder to Install.
Click "Next" if there are no changes.



8 Click "Next"



9 Installation is now in progress.



- 10 Installation is complete
Click "Close" to close the window.

